

PROPHIX G/L Reporter

A new standard for general ledger reporting

PROPHIX G/L Reporter combines the world's leading analysis engine with the most flexible reporting functionality for mid-sized companies. This out-of-the-box financial reporting and analysis solution easily connects with multiple General Ledger systems and features dozens of pre-built financial reports. G/L Reporter expedites reporting by replacing manual spreadsheet-based processes which allows companies to increase the frequency of analysis and react quickly to market conditions.

Benefits

Business users benefit from the easy-to-use and powerful reporting functionality included in PROPHIX G/L Reporter, such as:

- **Provide confidence in consolidated numbers**

PROPHIX provides organizations with a way to integrate data from different general ledgers or financial models in order to create a consolidated view of the business in multiple report formats. Intuitive wizard-driven import processes allow business people to manage their own data and relieve IT resources from routine access and maintenance.

- **Shorten closing cycles**

Expedite the closing process with automated report distribution, embedded report security, and controlled workflow. Re-allocate data and correct errors on the fly with SmartSwap™ and close your books faster.

- **Easily support for industry standards**

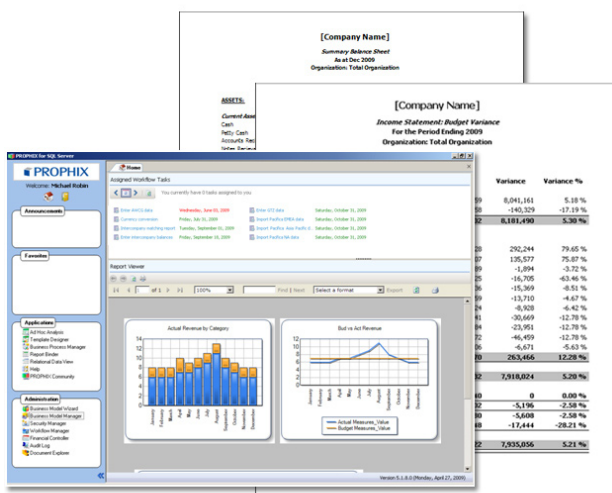
PROPHIX helps organizations comply with industry regulations by supporting generally accepted accounting practices (GAAP), international financial reporting standards (IFRS), Sarbanes-Oxley regulations, and extensible business reporting language (XBRL).

- **Enhanced data ownership with self-service tools**

Finance no longer need to wait on IT support to generate, format, and customize financial reports for the business. Business users can create their own reports using an Excel-like interface. PROPHIX Template Designer offers a simple SmartView™ methodology to ensure report templates are created once and reusable for multiple needs.

- **Get the Story Behind the Numbers**

Built on a powerful analysis engine, the interactive nature of PROPHIX reports provide detailed stakeholders from inside and outside the business with more analysis capability and insight into financial and non-financial information. Supporting details such as comments, line-item schedules and source transactions are a click away when reviewing data. Easily drill through or compare and contrast data to improve decision making.



Key Features

These key features found in PROPHIX G\L Reporter simplify the financial reporting process:

- **Controlled workflow and approvals**

Powerful workflow facilities control report distribution and approval tasks and automates subsequent processes. The workflow system also integrates with Microsoft Outlook and Microsoft Office SharePoint, where users can open reports directly from an e-mail or access them through a document library, respectively.

- **Easy report and dashboard customization**

Using the Template Designer, financial reports are built with SmartViews™, powerful building blocks of OLAP data, to report ensure efficient reuse and dynamic updates to content based on changing business structures, such as modified account structures or newly added product SKUs. SmartViews is a simple way of querying the data—without any programming knowledge required.

- **Automated and secure report distribution**

Distribute financial statements and management reports to key stakeholders in a secure controlled environment. Reduce reporting cycle times and improve accuracy by automating report distribution tasks.

- **Pre-built reports**

Twenty-five out-of-the-box financial reports and budget templates are provided with G/L Reporter for quick creation of reports such as Summary Balance Sheet, Income Statement with Budget Variance, and Cash Flow Statement. The inherent financial intelligence and pre-built reports facilitate rapid deployment without reliance on IT.

- **Multi-dimensional data visualization reports and dashboards**

PROPHIX encompasses visually appealing reports using familiar Excel charts and graphs, as well as integrating interactive reports. These interactive reports deliver eye-pleasing dashboards containing a variety of charts, gauges, maps, diagrams, data views and scorecards, which can be exported to Microsoft PowerPoint presentation files. Users can drill down into more detailed data, hyperlink to other essential documents across the organization, and easily analyze data from multiple business perspectives to provide insight into new opportunities and hidden threats.

- **Various access points to reports**

Users can create and generate secured reports for access by PROPHIX or exported to Adobe PDF, Microsoft Excel, or Report Definition Language (RDL) for access to real-time reports in other applications. Microsoft Office documents can also be integrated into formatted report binders.

- **Integration with multiple data sources**

The PROPHIX Data Management tool provides data validation, ETL, scheduled imports, and auditing capabilities, which enables the creation of dynamic and up-to-date reports. ODBC connections can be set up to allow PROPHIX to connect directly to virtually any data source within minutes.

- **Strong analytical capabilities**

Slice and dice actual and plan data in order to understand profit by product by region or expenses by project by department, and easily save the new view to create additional reports. Users can analyze the underlying data that contributes to a specific total or rollup value via real-time drill-down capabilities in reports.

About PROPHIX Software Inc.

PROPHIX Software is the leading developer of solutions designed to automate financial processes including budgeting, planning, reporting, analysis, and performance management for the midmarket. Finance leaders around the world use PROPHIX to empower their organization and gain greater insight into business performance.

PROPHIX and its partners deliver the best value by combining high end functionality, low total cost of ownership, and the fastest implementations in its class.