

PROPHIX Consolidations

PROPHIX Consolidations is the leading financial consolidation, reporting and analysis solution designed for mid-market companies with multiple entities. The solution expedites the consolidated reporting process, and increases control with journal entry, flexible report writing, auditing, multi-currency, and approval capabilities. By combining data from multiple ERP systems into a unified data source, PROPHIX provides the basis for a system of record, multiple reporting requirements, insight into true position, and centralized data for planning and budgeting purposes.

PROPHIX Consolidations helps reduce the time spent manually entering and validating data to ensure the financial consolidation processes can be completed consistently, accurately and on-time. Data from multiple sources can be consolidated and adjusted in a secure, fully auditable environment.

Multiple Source Data Integration

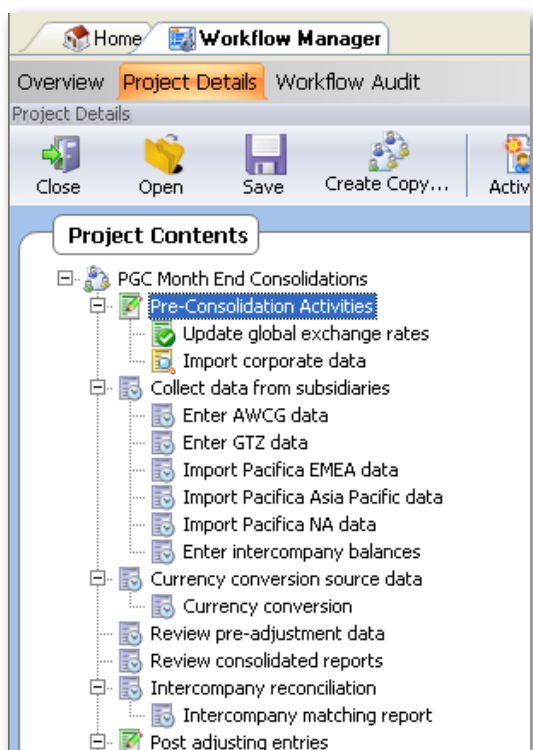
- Collect, map, and cleanse data from multiple disparate data sources, charts of account, calendars, and organizational structures
- Automate currency conversion using centrally managed exchange rates with automatic calculation of exchange rate differences

Accounting Standards and Regulation Compliance

- Manage consolidations across multiple accounting standards
- Monitor, approve, and audit all consolidation activities
- Utilize industry-leading OLAP technology to support multiple types of reporting (e.g. management, statutory, segmented) with full slice-and-dice and drill-across to transaction capabilities

Journal Adjustments

- Adjust data using journal entry templates with support for recurring and auto-reversing entries
- Create allocations based on any measure such as revenue, fixed percentages, headcount, or square footage
- Create repeatable intercompany elimination journal entries to automatically eliminate balances at the correct consolidated levels and generate matching reports



Data Security

- Limit user access, with role-based security, to perform certain tasks and to view specific data
- Control submissions and approvals of consolidated data with a powerful workflow engine and automatic e-mail notifications

Highlights

- Regain control to experience a more consistent and accurate closing process with improved data auditability
- Maintain greater collaboration and accountability of financial closing adjustments
- Manage complex consolidation environment including multi-currency, multi-level, and multi-reporting requirements
- Rapid implementation through the use of existing PROPHIX business models and familiar user interface
- Integrate planning and forecasting processes with consolidations

AWCG Corporation
Consolidated Balance Sheet
For Period Ending January 2009

	Source	Adjusted Balances	Consolidated
(1000) Cash	54,737,643	35,000	54,772,643
(1010) Short Term Securities	3,550,081	-50,000	3,500,081
(1100) Accounts Receivable	24,840,000	-17,000	24,823,000
(1110) Short Term Investments	2,582,363		2,582,363
(1120) Notes Receivable ST	3,812,060		3,812,060
(1200) Inventories	2,514,120		2,514,120
(1310) Other Current Assets	614,848		614,848
(1300) Prepaid Expenses	97,257		97,257
(1610) Deposits	30,742	15,000	45,742
(11000) Current Assets	92,779,116	-17,000	92,762,116
(1400) Property, Plant & Equipment	7,976,400	25,000	8,001,400
(1500) Accumulated Depreciation - PP&E	-6,127,476	-25,000	-6,152,476
(12000) Net Fixed Assets	1,848,924	0	1,848,924
(1550) Other Intangible Assets	184,455		184,455
(1650) Goodwill	122,970		122,970
(1560) Amortization - Other Intangibles	-92,227		-92,227
(1660) Amortization - Goodwill	-3,074		-3,074
(13000) Net Intangible Assets	212,123		212,123

About PROPHIX Software Inc.

PROPHIX Software is the leading developer of solutions designed to automate financial processes including planning, reporting, analysis, and performance management for the midmarket. Finance leaders around the world use PROPHIX to empower their organization and gain greater insight into business performance.

PROPHIX and its partners deliver the best value by combining high end functionality, low total cost of ownership, and the fastest implementations in its class.